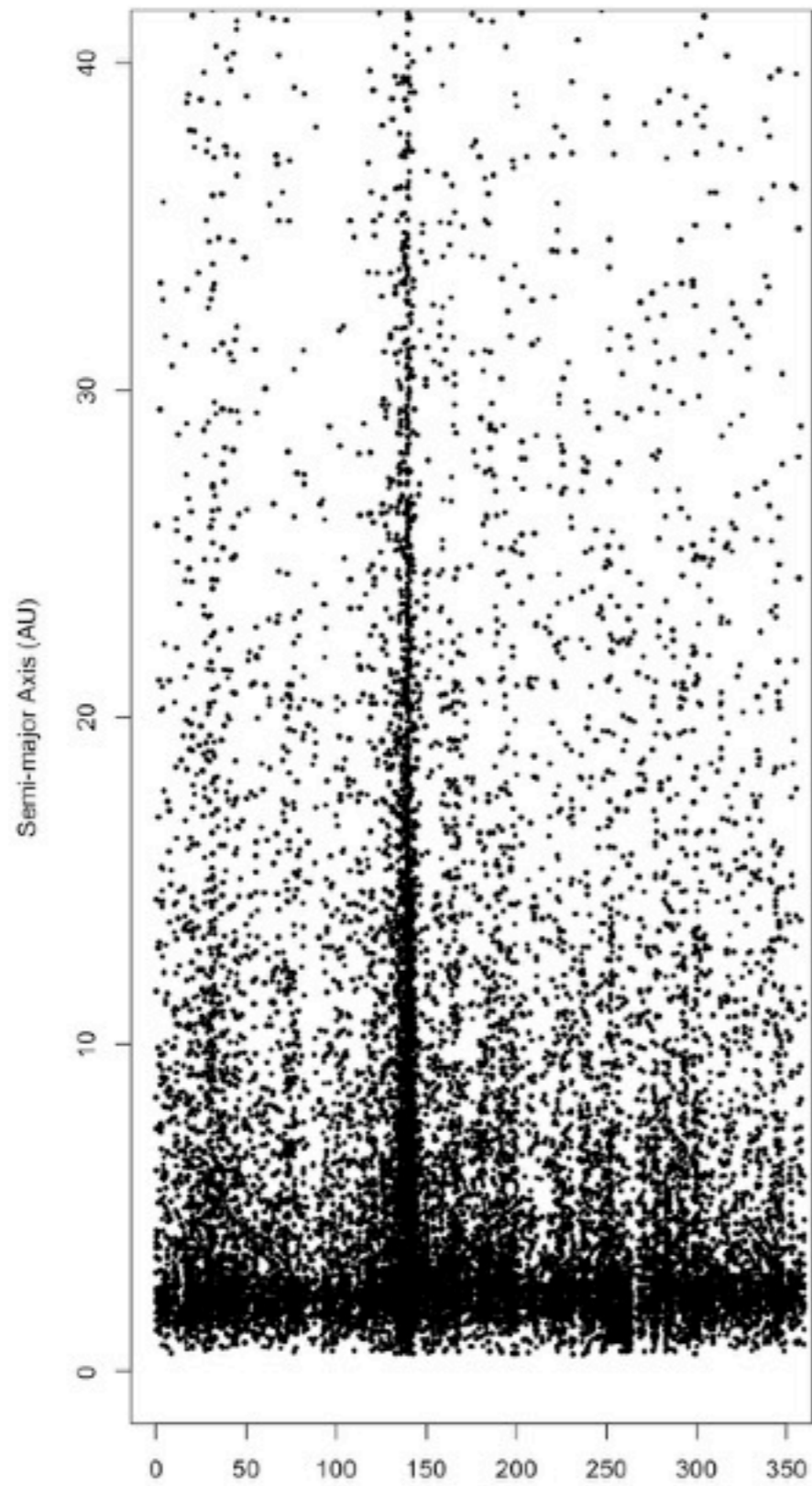
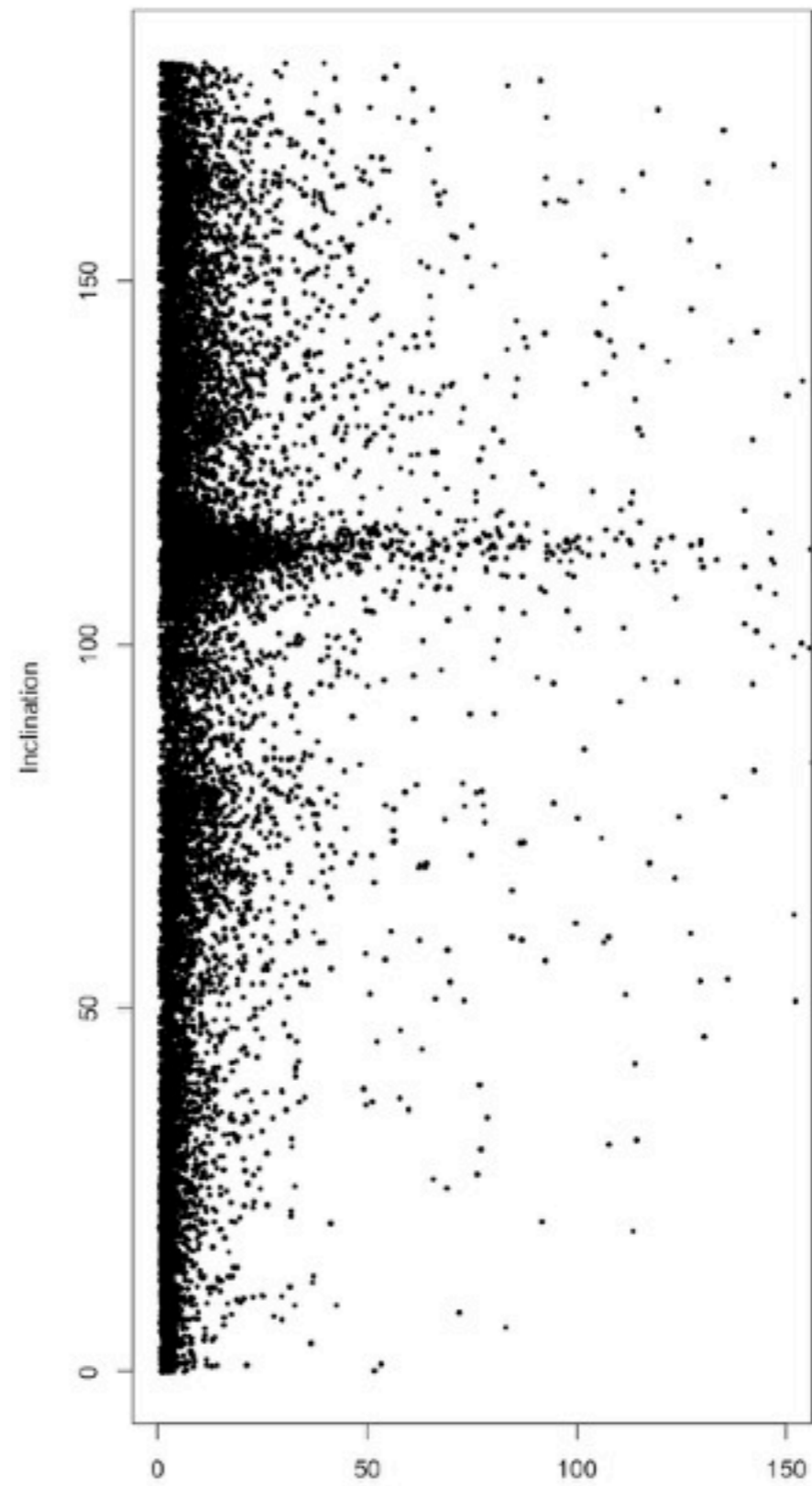


Longitude of Ascending Node vs Semi-major axis
(All streams and sporadics)



Longitude of the Ascending Node (Deg)
Dataset: ALL period 2012-08-09 to 2017-05-27

Semi-major axis vs Inclination
(All streams and sporadics)

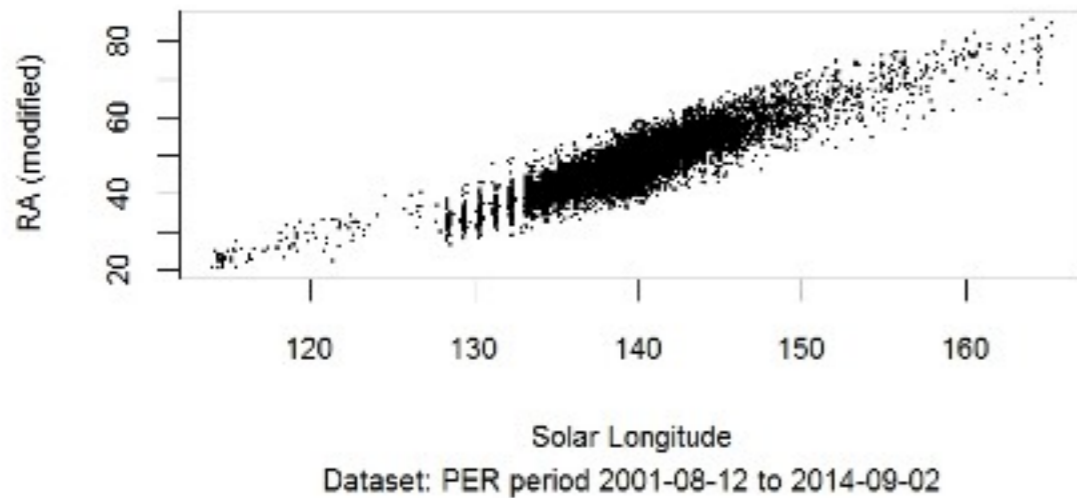


Semi-major Axis (AU)
Dataset: ALL period 2012-08-09 to 2017-05-27

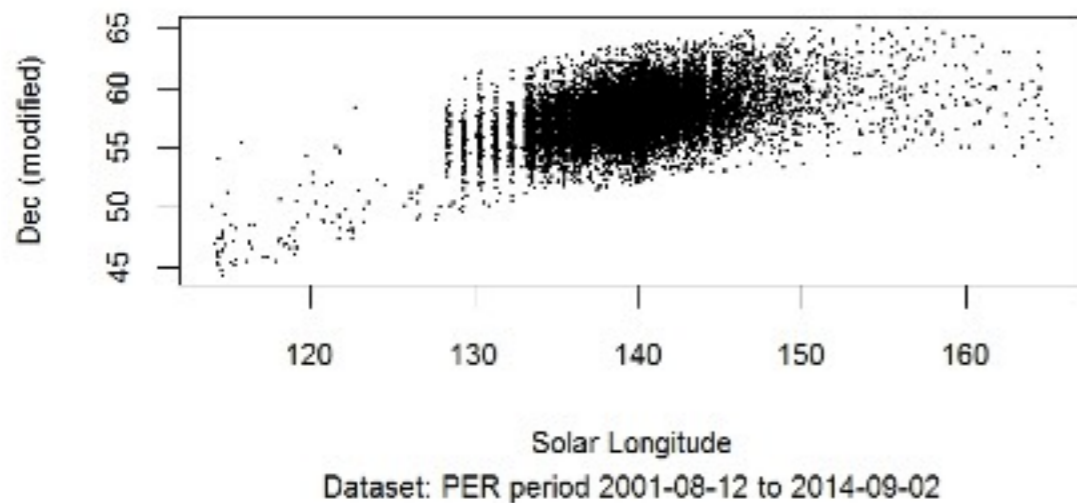
UKMON science

Radiant movement

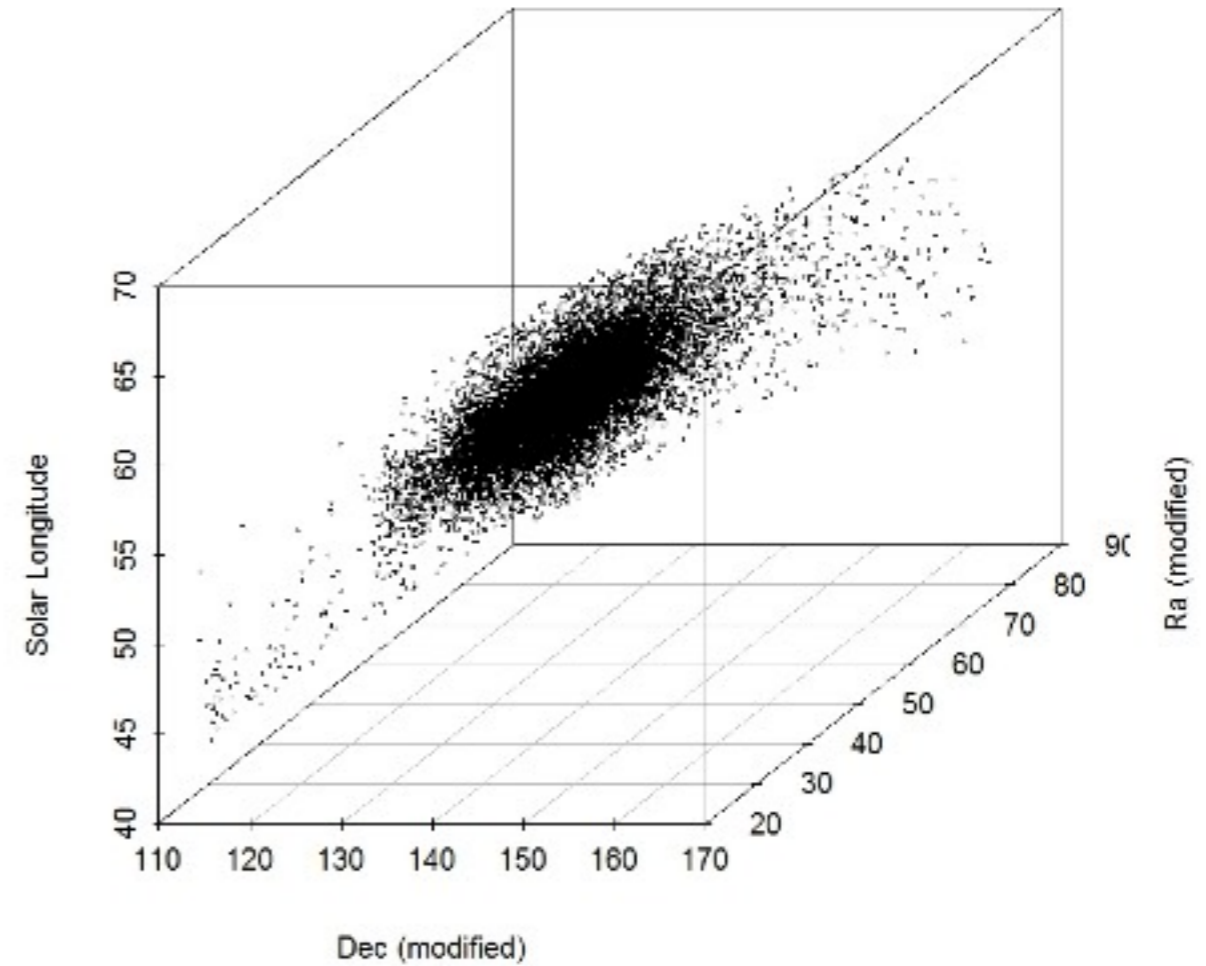
Solar Longitude of observed time vs RA / H2 (Perseids)



Solar Longitude of observed time vs Dec / H2 (Perseids)



Solar Longitude of observed time vs RA and Dec (Perseids)



Dataset: PER period 2001-08-12 to 2014-09-02